

Mark43 Alternate CAD

Reduce emergency downtime with responsive and resilient technology

Public safety is constantly pressured with evolving threats and heightened expectations. Natural disasters, cyberattacks, and system outages put technology and data at risk. Siloed platforms leave agencies stranded amidst outages and breaches. Agencies must protect their systems, sustain operations, access appropriate resources, and collaborate across all necessary channels as events transpire.

Mark43 Alternate CAD is designed to serve as a backup to your community's primary CAD, providing the modern technology needed to keep your agency operating and constantly connected. Mark43 offers a resilient, user-friendly cloud-native platform, allowing it to operate without interruption during natural disasters and other emergencies impacting the city, state or region. Innovative, reliable and best-in-class technology is vital so that first responders can keep working when their community needs them the most, in circumstances when the primary CAD systems have gone down. When the primary CAD is impacted by extreme weather or a critical incident, having the Mark43 Alternate CAD in place will ensure there aren't interruptions to potentially lifesaving response. Mark43 CAD also provides vital functionality that pinpoints exact locations, provides enhanced mapping functionality and easily displays data for increased situational awareness when officers arrive at calls, enhancing both officer safety and their ability to meet the specific needs of their community.

- ◆ **Stay connected during your most pressing times**

Mark43 operates across three geographically diverse availability zones, located across different flood zones and seismic planes, to ensure maximum resiliency to outages and disasters. Dispatchers and first responders can continue sharing and receiving critical data throughout their mission.

- ◆ **Protect your data with the strongest security posture possible**

Modern architecture ensures that your data is protected using the latest in cybersecurity technology and best practices. By partnering with AWS, Mark43 has the most advanced [security posture](#) available to public safety.

- ◆ **Scale your environment to quickly adjust to changing demands**

Benefit from unmatched accessibility. Mark43 is the only cloud-native RMS and CAD platform, enabling Mark43 to minimize downtime during any disruption by continuously backing up data across multiple geographically dispersed availability zones. AWS GovCloud provides agencies with the best-in-class resiliency available. Regardless of whether manmade or natural disasters hit a particular part of the country, your data and access to Mark43 will be intact.

- ◆ **Implement and train with ease**

User-friendly, cloud-native technology ensures you are up and running in a matter of weeks. With dedicated customer support, Mark43 will provide 24/7 steadfast assistance that is second to none to address customer needs and questions as they arise.



It is critical that our dispatchers have tools that they can rely on in a true emergency, supporting them in what is already a difficult job. The resiliency of the Mark43 CAD means that during an emergency or a natural disaster, our first responders can remain where they belong, answering calls and helping our community.

- Stephen Martini,
Nashville's Emergency
Communications Director

EVENT #0002
 Call-taker C. Rodriguez #12345 REV # 10372890

POLICE EVENT INFO
 Loc: 101-199 NW 56th St, Apt. Unit - MAP
 SEATTLE, WA 98109
 PULCRINE PL NW Apt NW
 Note: Positioned at SE corner
 Police Subd: MP 1001 MTSD SEATTLE
 CFS 459 - Burglary (Residential) P/P P1 Origin: 911
 Police District: South Area Police Agency Seattle PD Police Primary Radio: 212
 RP Johnny Bravo (212) 338-4829

COMMAND LINE
 ▶CE #2201230002 DISP:ARRESTED;

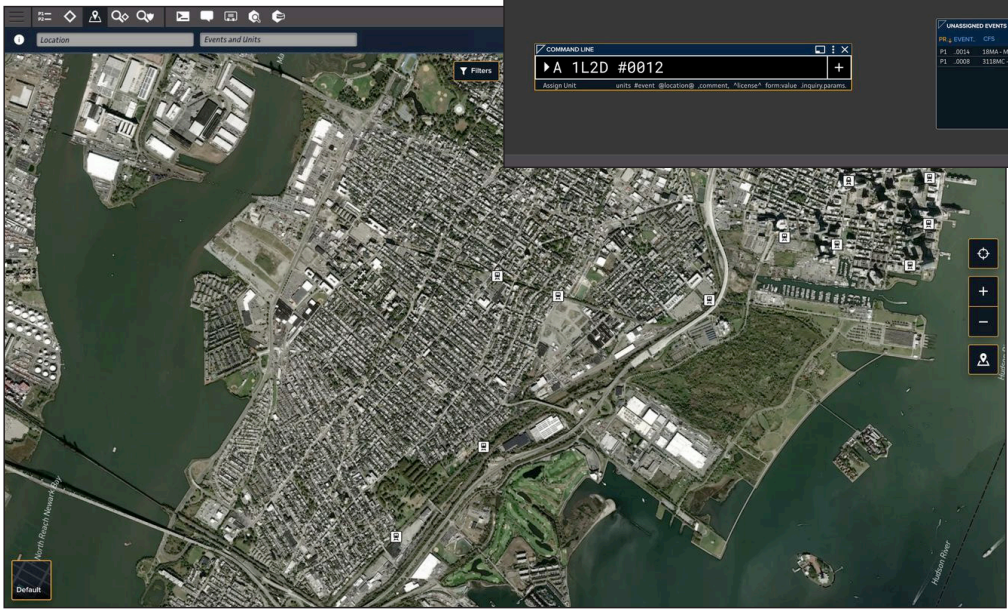
ASSIGNED UNITS

UNIT	STATUS	SSA	PRIORITY	EVENT #	UNIT LOCATION	UNIT LOCATION NOTES	SUB	EVENT LOCATION	PERSONNEL
71	EN ROUTE	3a	P1	#003	59 BAWN BROOKS		3N	8445 NW 45TH ST	BRADLEY GORDINE
402	DIRECTED PA	3a			843 NW 10TH ST	STATIONED NEAR FRONT DOOR	3N		THOMPTON HANSON
700	AT SCENE	45a			843 NW 10TH ST	MONITORING BACK DOOR	3N		GARY WELPS
107	DIRECTED PA	3a			8000 NW 41ST ST	BLOCKING TRAFFIC	3N		PALMIE GIBBS
509	AT SCENE	05a 25a	P2	#006	890 MARCOS NECK	PARKED OUTSIDE	2N	890 MARCOS NECK	ZEN PROSSER
160	EN ROUTE	7a			MARCOS / MARIST		2S		DEAN REAL
312	EN ROUTE	7a			300 FEDERAL ST		1S		CLENN HAMPTON
238	AT SCENE	35a			890 MARCOS NECK	TALKING TO NEIGHBORS	2N		BRANA WOODRICKSON
224	REPORT VERT	43a	P5	#014	52 FAY MANORS		2N	52 FAY MANORS	NORA TERRY
170	AT SCENE	7a	P5	#007	838 FINE BVE	NEAR BRIDGE CROSS	2S	838 FINE BVE	BRUCE BROWN
101	EN ROUTE	SM			HANE / DELAIRE	BLOCKING TRAFFIC	3W		JEFFREY FRENCH
162	EN ROUTE	45a	P5	#012	773 JARCE VILLAGES SUITE 206	MONITORING FRONT DOOR	2S	773 JARCE VILLAGES	MARINO SANCHEZ
120	TRANSPORT	3a			773 JARCE VILLAGES SUITE 206	POSITIONING AT CORNER	3W		DUSTIN GLEBERT
203	AT SCENE	05a 25a			JARCE / BOEIM	TALKING TO PD	3W		THOMAS FULLER
201	EN ROUTE	7a	P1	#020	0642 3RD AVENUE	LOCATING ENGINE	2S	0642 3RD AVENUE	METTRICK
85	AT SCENE	7a	P1	#008	522 HENNER WAY	ON FOOT	2S	522 HENNER WAY	EJUAN POWELL
187	TRANSPORT	35a	P1	#012	BRODERICK / LAKE	TRANSPORTING EVIDENCE	4E	3123 BRODERICK ST	METHPPOPE
208	EN ROUTE	3a			5208 BRODERICK ST	BLOCKING TRAFFIC	3W		BRADLEY AND ALICIA LIN
71	EN ROUTE	3a			1500 BRODERICK ST	BLOCKING TRAFFIC	2S		JESSE MADRINO
406	EN ROUTE	3a			BRODERICK / HANSEN	BLOCKING TRAFFIC	3W		SAMM JEFFERSON
300	AT SCENE	45a			1123 BRODERICK / HANSEN	APPROACHING SUSPECT	3W		REHMAN TROD
224	AT SCENE	35a	P2	#016	5103 TORREY LN	CROWD CONTROL	4E	5103 TORREY LN	EUGENE CASKY
805	EN ROUTE	7a	P2	#008	WALTON BLVD		4E	3022 COOKMAN BLVD	CHRISTOPHER
312	TRANSPORT	35a	P3	#036	WALTER / PINE	TRANSPORTING EVIDENCE	4E	905 WALTER HOLLOW	CARL HAMMERMAN

UNASSIGNED EVENTS

PR. #	EVENT	CFS	REAR	LOCATION	RECV	TRAVEL	DM	MAP	UNITS
P1	0024	188A - MISSING ADUL	30P	1625 MAIN AVE	8	13:03	13:38	13	Lozen team dallas ct.
P1	0008	3118C - MISSING CH	25	162501 FEDERAL ST	12:35	13:58	39	Lozen team dallas ct.	

COMMAND LINE
 ▶A 1L2D #0012



“
 With Mark43, our mission-critical systems stay operational during the worst weather conditions. Partner jurisdictions experience significant technology outages, but LSP keeps running.

- Analyst Carpenter,
 Louisiana State Police